



Logement B403 Type T3

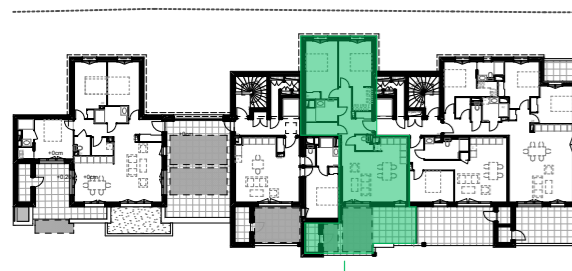
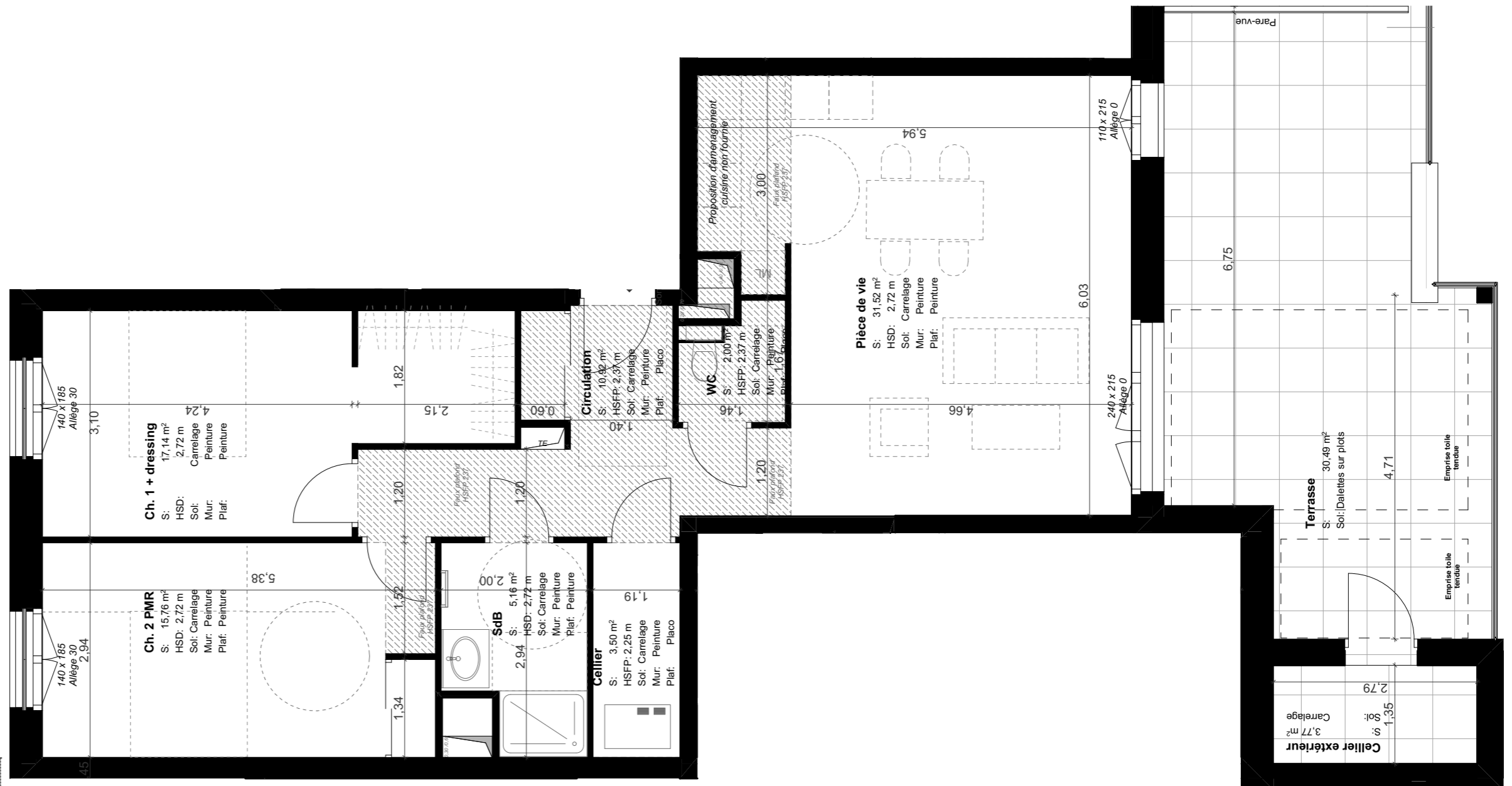
Niveau R+4

Surfaces habitables

Cellier	3,50
Ch. 1 + dressing	17,14
Ch. 2 PMR	15,76
Circulation	10,92
Pièce de vie	31,52
SdB	5,16
WC	2,00
Total	86,00 m²

Extérieurs

Cellier extérieur	3,77
Terrasse	30,49
Total	34,26 m²



Faux plafond - Hauteur 2m37

