



### Logement B303 Type T3

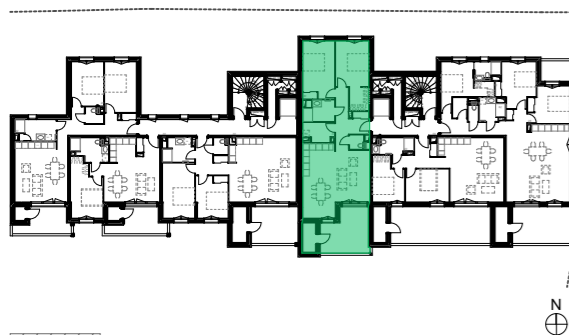
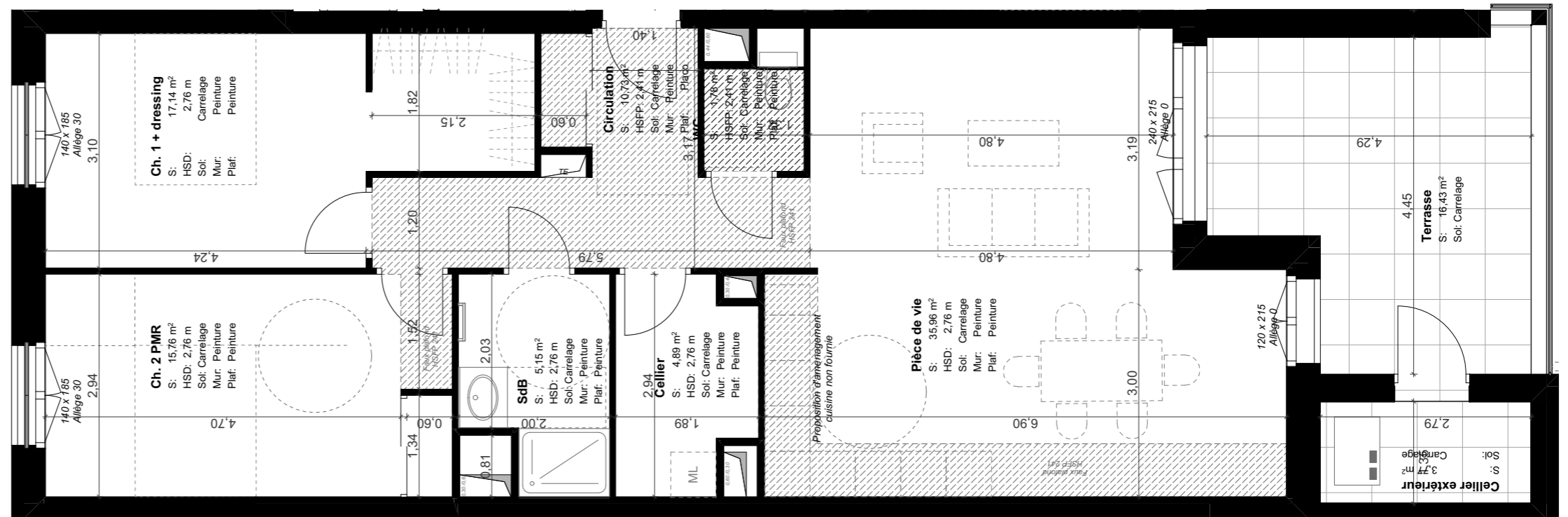
Niveau R+3

#### Surfaces habitables

Cellier	4,89
Ch. 1 + dressing	17,14
Ch. 2 PMR	15,76
Circulation	10,73
Pièce de vie	35,96
SdB	5,15
WC	1,78
<b>Total</b>	<b>91,41 m<sup>2</sup></b>

#### Extérieurs

Cellier extérieur	3,77
Terrasse	16,43
<b>Total</b>	<b>20,20 m<sup>2</sup></b>



Faux plafond - Hauteur 2m41

