



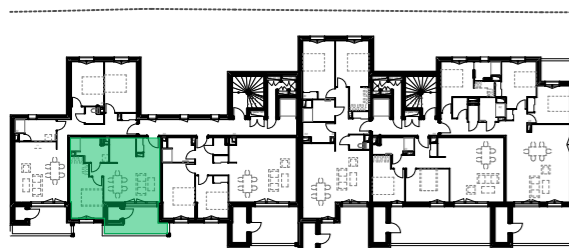
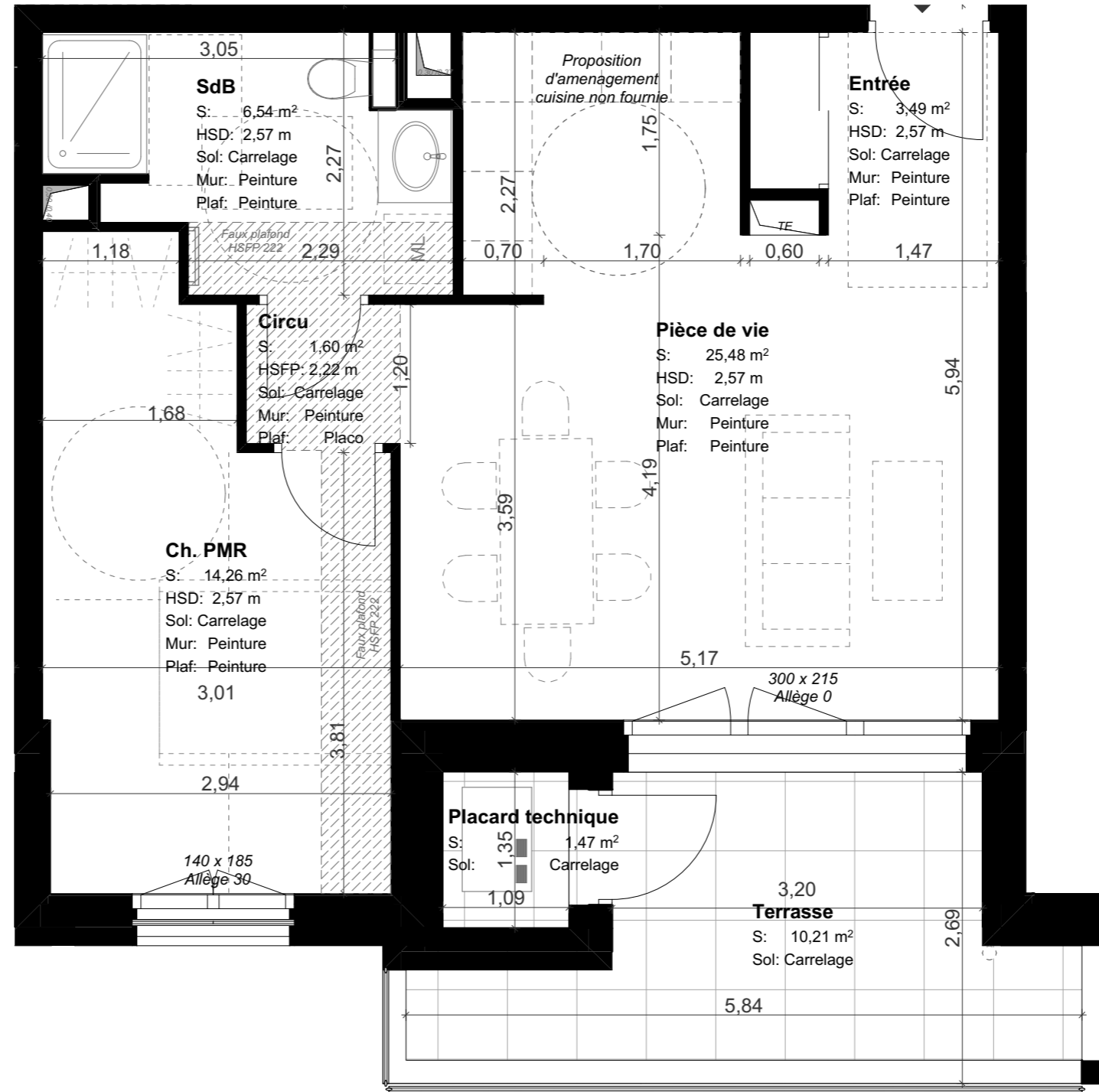
Logement A202 Type T2
Niveau R+2

Surfaces habitables

Ch. PMR	14,26
Circu	1,60
Entrée	3,49
Pièce de vie	25,48
SdB	6,54
	51,37 m ²

Extérieurs

Placard technique	1,47
Terrasse	10,21
	11,68 m ²



Faux plafond - Hauteur 2m22

